

Device Console Migration Notes

Feb 28, 2023

Step 1 of 3

[Install latest USB Audio Control version 5.57 \(Windows-Only\)](#)

Step 2 of 3

[Program XMOS Firmware version 1.50 or later with DFU Tool](#)

[DFU-Tool Location](#)

[DFU-Tool File](#)

[XMOS-Firmware Location](#)

[XMOS-Firmware File \(latest version 1.59\)](#)

[Windows](#)

[MacOS](#)

[Step 3 of 3 \(if Flex or Flex-DL has been used with MiniDSP 2x4HD or DDRC-24 Plugin\)](#)

[Flex](#)

[Flex DL](#)

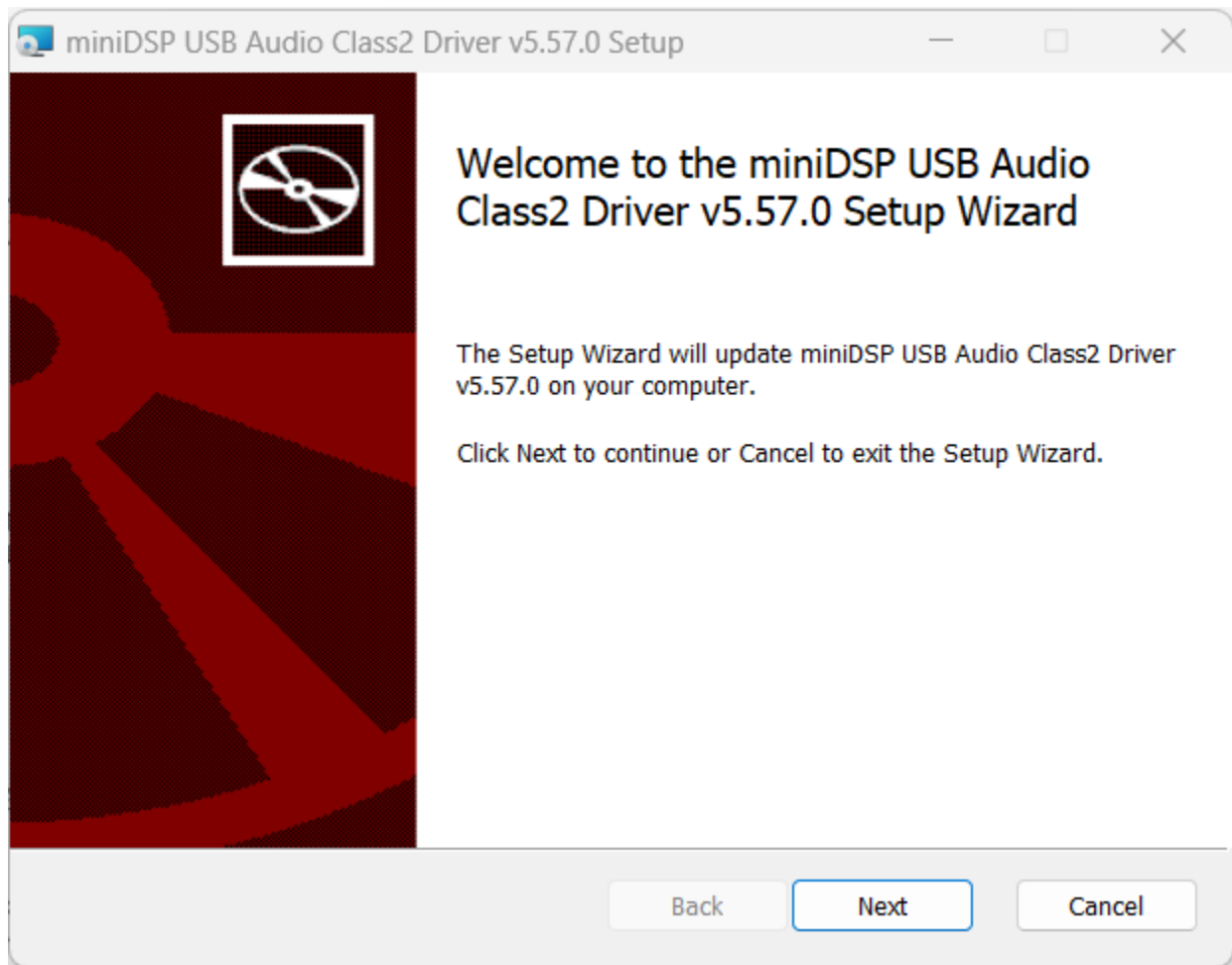
Step 1 of 3

Install latest USB Audio Control version 5.57 (Windows-Only)

Note: this step is only required for Windows user.

Location: *USB Audio Control* folder

File: miniDSP_UAC2_v5.57.0_2023-02-23_setup.exe



Step 2 of 3

Program XMOS Firmware version 1.50 or later with DFU Tool

Note: this step is only necessary if the Firmware version on the Flex / Flex-DL is older than version 1.50.

DFU-Tool Location

[Windows] XMOS Firmware / Firmware_Upgrade_Tools / Windows / miniDSPUAC2Dfu

[MacOS] XMOS Firmware / Firmware_Upgrade_Tools / Mac

DFU-Tool File

[Windows] miniDSPUAC2Dfu.exe

[MacOS] miniDSP_USBDFU_v2.30.0_DfuApp_macOS_2020-05-27.zip

XMOS-Firmware Location

XMOS Firmware

XMOS-Firmware File (latest version 1.59)

miniDSP_Flex_XMOS_v1.59_up.bin

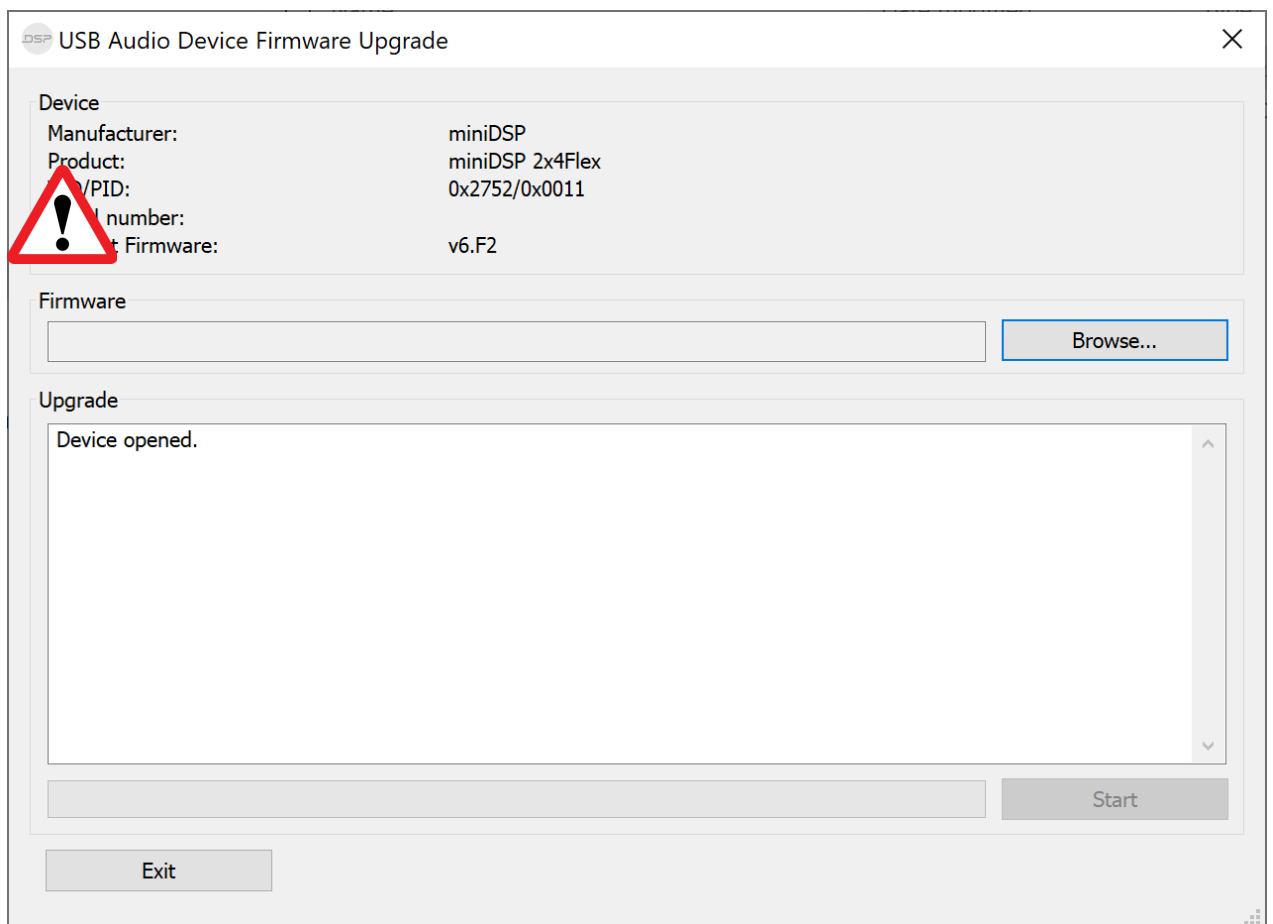
The following steps are copied from Flex User Manual.



DO NOT DISCONNECT THE USB CABLE OR POWER FROM THE *miniDSP Flex* WHILE FIRMWARE UPGRADE IS IN PROGRESS. DOING SO MAY “BRICK” YOUR *miniDSP Flex*.

Windows

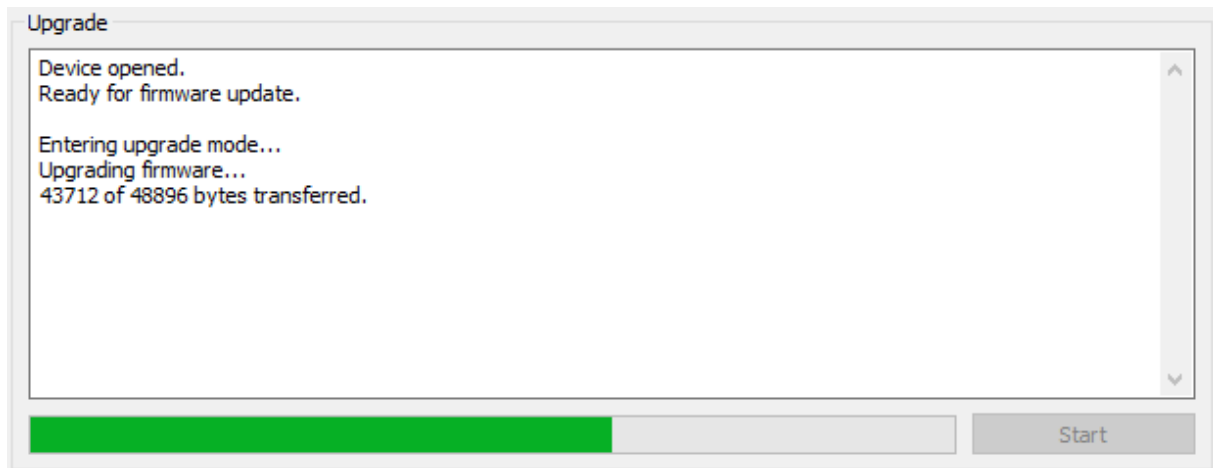
1. Connect the miniDSP Flex to your computer via USB (if not already connected) and power it on.
2. Navigate to the **XMOS_Firmware\Firmware_Upgrade_Tools\Windows\miniDSPUAC2Dfu** folder of the software download.
3. Double-click on the **miniDSPUAC2Dfu.exe** program to run it:



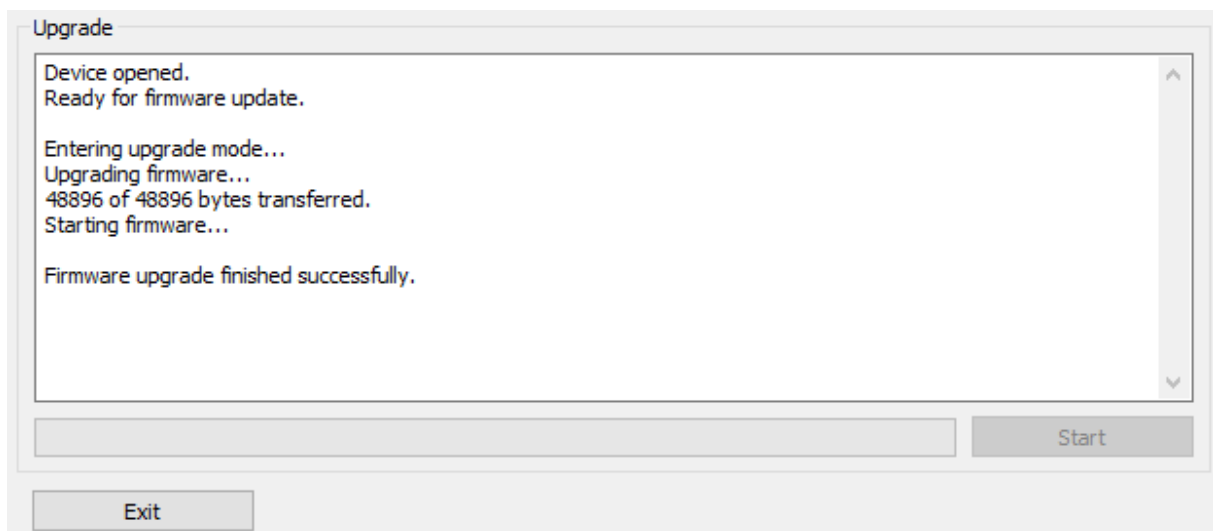
Click on the **Browse** button and select the firmware file from the **XMOS_Firmware** folder of the software download. It will have a name like “miniDSP_Flex_XMOS_v1.23_up.bin.” (The version number embedded in the file name may change.)

Do **not** proceed if the name of the firmware file does not begin with “miniDSP_Flex_XMOS.” If you have other miniDSP devices, double-check that you have not inadvertently selected the wrong file.

4. Click on the **Start** button.
5. You will get a progress bar as upgrade proceeds:



6. Once the firmware upgrade completes, you will see a message that the upgrade completed

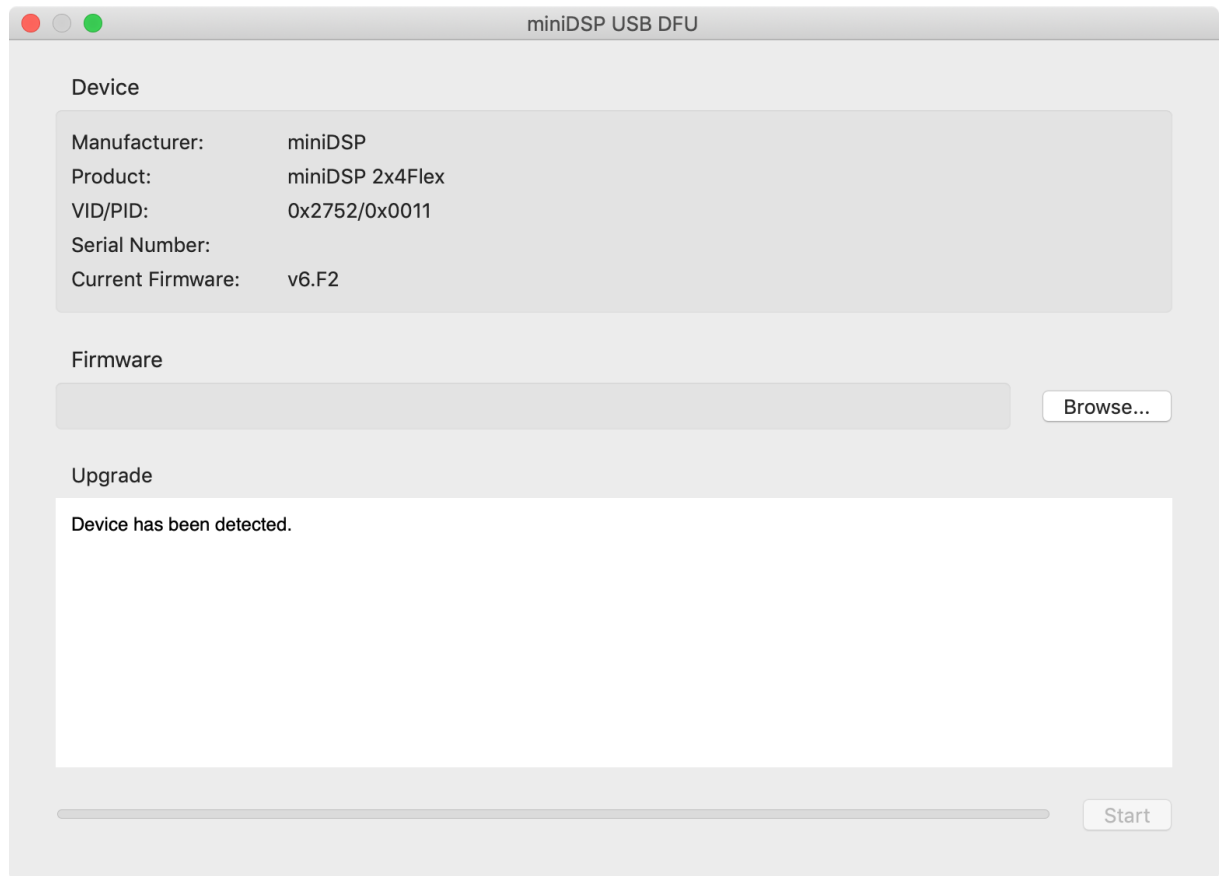


successfully:

7. Click on **Exit**.
8. That's it! You're done. You can now use your miniDSP Flex with the new functionality.

MacOS

1. Connect the miniDSP Flex to your computer via USB (if not already connected) and power it on.
2. Navigate to the **XMOS_Firmware/Firmware_Upgrade_Tools/Mac** folder of the software download.
3. Double-click on the **DFU Utility.app** program to run it:

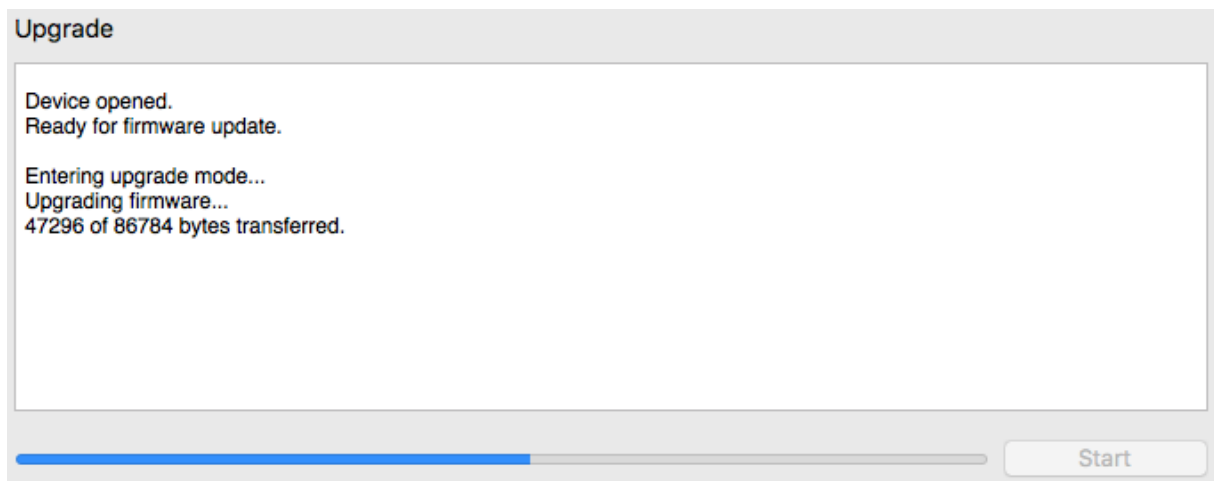


- Click on the **Browse** button and select the firmware file from the **XMOS_Firmware** folder of the software download. It will have a name like “miniDSP_Flex_XMOS_v1.23_up.bin.” (The version number embedded in the file name may change.)

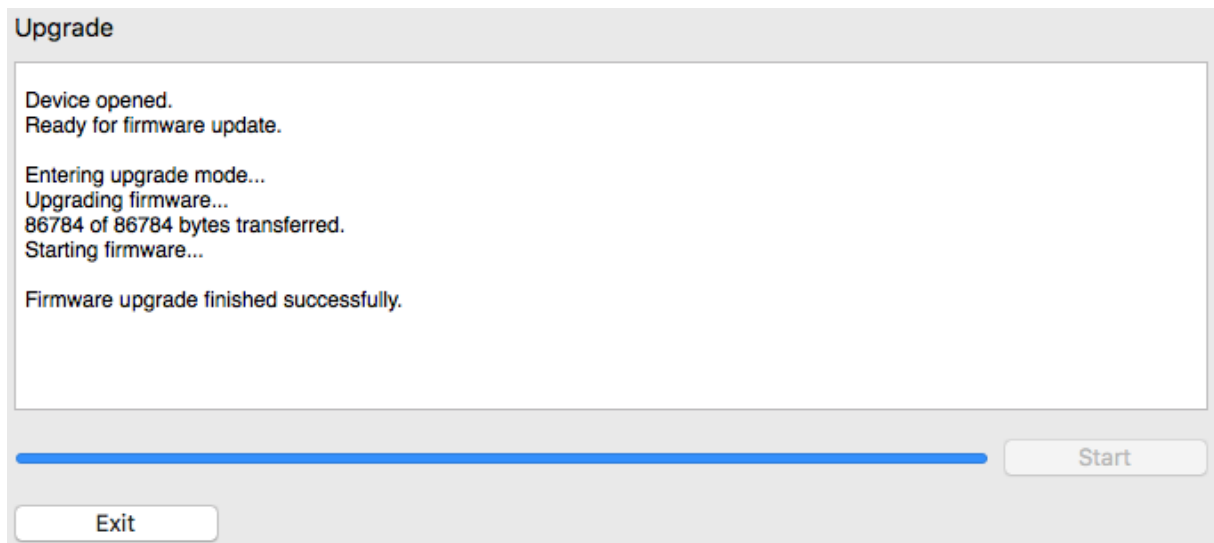


Do **not** proceed if the name of the firmware file does not begin with “miniDSP_Flex_XMOS.” If you have other miniDSP devices, double-check that you have not inadvertently selected the wrong file.

- Click on the **Start** button.
- You will get a progress bar as the upgrade proceeds:



- Once the firmware upgrade completes, you will see a message that the upgrade completed



successfully:

8. Click on **Exit**.
9. That's it! You're done. You can now use your miniDSP Flex with the new functionality.

Step 3 of 3 (if Flex or Flex-DL has been used with MiniDSP 2x4HD or DDRC-24 Plugin)

Start MiniDSP Device Console software, Choose the Flex or Flex-DL from the Discovered Devices section to connect.

Flex

Corresponding Preset from MiniDSP 2x4-HD Plugin will be migrated to Device Console, if applicable. Otherwise, users will be prompted to restore to default settings.

Flex DL

Corresponding Preset from MiniDSP DDRC-24 Plugin will NOT be migrated to Device Console.

Preset Files Location:

 Documents > MiniDSP > DDRC-24 > setting

Please use the **Import Preset** function to migrate them over one by one. For details, please refer to online User Manual:

<https://docs.minidsp.com/product-manuals/flex-dl/device-console.html#importing-and-exporting>